

LUXE ET AL

£4.80

THE WINNERS ISSUE

PART ONE





MICHELA REVERBERI

OWNER - MICHELA REVERBERI STUDIO

Tell us a little about your background in design (education, experience etc.).

I graduated in Architecture in Rome. After ten years' experience in other architecture studios, of which eight were spent in Luigi Sturchio's office, I started my own firm.

What projects are you currently working on?

I am developing a project of an 80m M/Y for Turquoise Yachts, a skyscraper for Vitruvius in Hong Kong and a 7-star resort in Tuscany.

What projects have you recently completed?

I just completed the refit of 64m S/Y Spirit of the C's by Perini and the 55m M/Y Quinta Essentia.

What companies have you worked with for the above projects?

The refit of Spirit was carried out by Compositeworks Shipyard and the construction of Quinta Essentia was carried out by the Italian Sea Group.

Where do you feel super yacht design is going in terms of interior schemes?

Yacht design years ago drew its main references from the sea and projects were mainly founded on the idea the boats were used to cruise the seas. Despite how luxurious they were, architectural and design choices were relegated to a small pool of aesthetic referring models, extremely identified and definitely limited compared to the aesthetical, architectural and technological world available for urban projects. The gap between the two worlds was quite clear.

But as it is instinctual to look further, to experience, to contaminate and to be contaminated, to structure and de-structure, overcome and return, I think more and more that yacht design is going towards the overcoming of this gap.

Are there any key design directions you would like to discuss?

A greater awareness of the emotional potential of any projects that are going to be developed, assuming some risks in overcoming rules. All the choices shall tend to a merge and integration with the environment and a much greater respect for the natural elements that the boat will cross.

Trends going forward?

A wider coherence between the interior and exterior of yachts until a fade between the boundaries.

What are your favourite recent schemes? Please describe key elements.

I am particularly fascinated in managing potentiality offered by the quantity and dimension of glass surfaces. On Stella Maris, for instance, the dimensions of the windows were amazing and they surrounded the salons on three sides.

The project emphasized the verticality of the space, the power of the light, the unusual relationship between empty and full, reinterpreting the diversity and original features of the boat, connecting all elements through a rewriting of rules that govern the arrangement of the spaces and relationship between light and shadow, full and empty. A solution for artificial light had to be found as well at that point, it required a solution that

could look forward, considering that since the beginning the choice of the spotlight was generally inadequate.

What products/services could you not live without when designing?

Music and fun. I enjoy doing what I do and I love working with people I esteem and that share my same passion for their work.

Any final thoughts?

I am always ready to face any challenge, without prejudices and preconceptions, in order to achieve projects that look different and I will greatly enjoy.

So, a little bit about you:

Your favourite place to travel to in the world?

All places where I can find new ideas and enjoy my family and friends, but Brazil has a special meaning for me. It is where everything started!

All non-places where I can escape in books and dreams.

Your favourite hotel/ restaurant/ bar?

I feel so happy when I spend my time in some boutique hotels in London, enjoying food in good fish restaurants in Paris and bars on the seaside and looking at the sunset with a glass of wine.

I must add a special hotel for me, the Dylan hotel in Amsterdam, where I realized the biggest gift I received in my life was arriving and my life wouldn't be the same anymore.

The place that gives you the most energy?

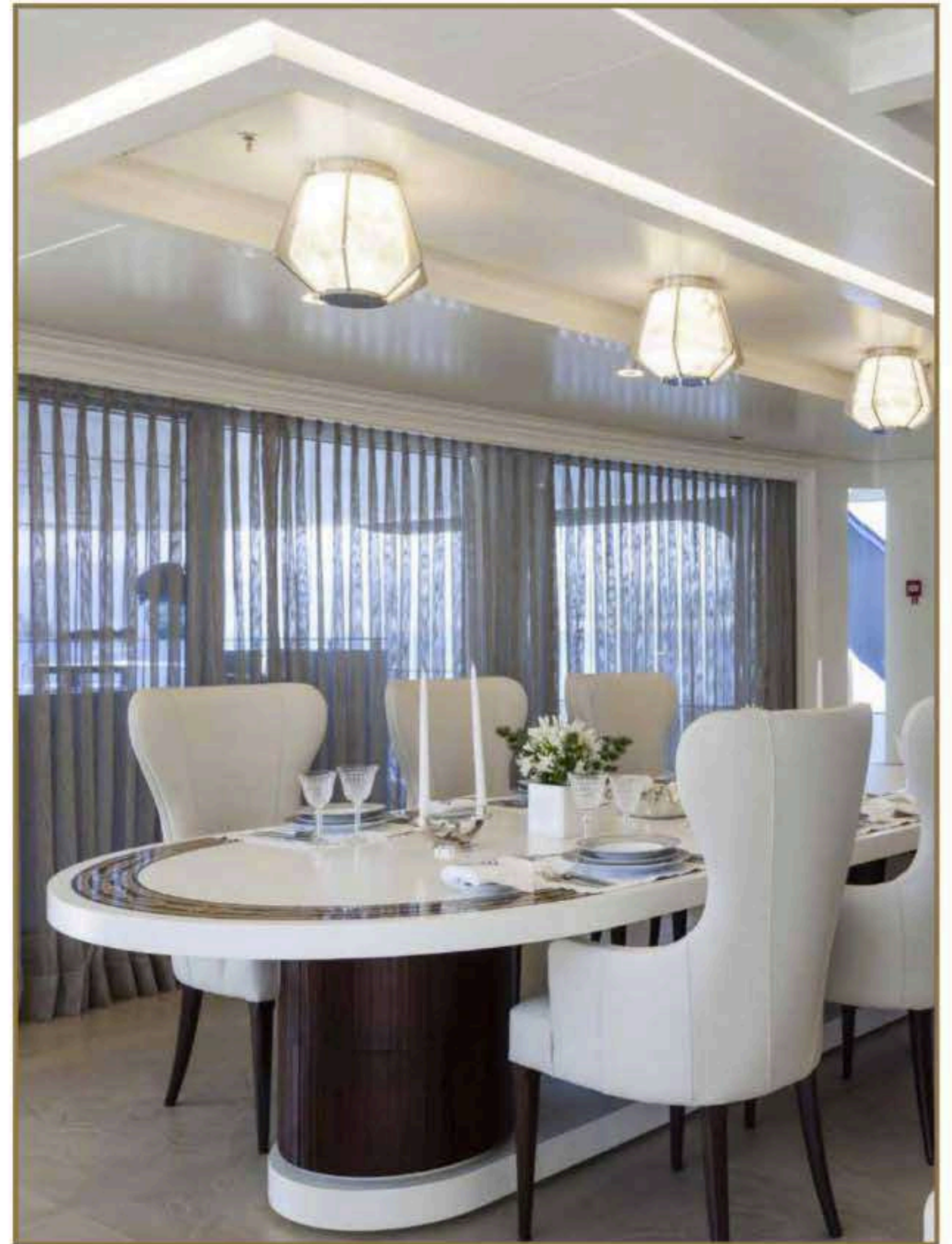
Rome, the city where I live. I love it. Despite its several defects, it remains a very sensual city, able to provide big emotions for me.



WINNER / MAIN SALON

INTERIOR DESIGN INSPIRED BY THE ELEMENTS OF EARTH AND WATER

Quinta Essentia
by Michela Reverberi







“THE PROJECT WAS CONCEIVED FROM THE OWNER’S DESIRE TO BUILD A BOAT THAT COULD EVOKE ALL THE CHARACTERISTIC ELEMENTS OF TUSCANY.”

With great pride The Italian Sea Group have launched their largest motor yacht yet, Admiral’s new 180-foot Quinta Essentia. The yacht’s naval architecture was done by the Dutch firm Vripack, who worked with Dobroserdov Design to create a progressive-looking profile over the full-displacement hull. Entirely made in aluminum, she boasts a gross tonnage of 870 GT.

This magnificent vessel can now add the title of ‘Winner’ at The International Yacht and Aviation Awards 2017 in the Main Salon category to its list of achievements.

The award winning interior design of Quinta Essentia was performed by Michela Reverberi Studios, based in Rome, who described the ideas behind the design.

“The project was conceived from the owner’s desire to build a boat that could evoke all the characteristic elements of Tuscany, a place that the owner particularly loves; he has a property in Tuscany, where they produce wine and oil. The input was to evoke in the project suggestions of that country and activities related to countryside life.

The project offered a big challenge, considering the difference of the two natural elements to take into consideration, earth and water, and the unusualness of their combination. I have not emphasised the idea either of the difference, or the break between the elements, but rather the possibility of coexistence.

From this consideration, we searched to find a key to access these elements in the marine world and its current aesthetic and cultural configuration that did not lead to the distortion of the element of the sea, but instead, that allowed the coexistence of these two giant protagonists of nature, the sea and the countryside.”

The project also had to take into consideration another of the owner’s expectation, the representation of the

four natural elements of which the boat, as a whole and in its synthesis, was to be comprised of, alongside the addition of its fifth element — ‘quinta essentia’.

It began with the choosing of atypical elements, identifying those that that encompassed a highly significant meaning. “The wine, the glass, the movement that creates the liquid in the typical gesture of the taster when you spin it before tasting it, grapes, vine leaves in their full range of colours available in the different seasons, the colour of the earth, the sky.”

Elements were used through the study of certain movement, though not necessarily always as a direct representation but at least as an influence. “The wall of the staircase contains within it the pattern and colour of the representation of the movement of the wine in the glass, which was exaggerated to become a marine wave.”

The client’s expectations and desires were addressed and resolved by the adoption of unexpected viewpoints reaching a balance of style with unique, sophisticated and innovative solutions.

Traditional yachts often have formal salons and cabins that are hardly ever used, limiting space for different types of entertainment on board. In search for efficiency, Quinta Essentia’s owner created a layout with four different types of activity on the four decks where all space on board is used in the optimal way. Quinta Essentia has a volume of 873 GT, 25% more than her Dutch competitors. The high volume translates not only in more square meters but also in more deck heights.

The yacht features huge open and covered deck areas, which creates a balanced space for a relaxed and informal lifestyle. When sitting aft on the main deck, the owner and guests can enjoy a large lounging area overlooking a huge pool. The engine room was moved to the center of the yacht to create a vast Wellness and Spa area on the lower deck aft, featuring a steam room, sauna room,

treatments room, relaxation room and side balcony. The Wellness & Spa area is directly connected to the swimming platform aft. Above, on the upper deck, lies the lofty main saloon with an indoor/outdoor area for alfresco dining. The top deck presents a spacious gym with massive windows and a jacuzzi to relax outside.

One of Quinta Essentia’s luxuries has to be her beach deck. The entire full beam aft section of the lower deck has been dedicated to wellness and watersports. Here guests can be treated in an on-board massage room, sauna and hamman. After which, guests are led onto the 45 square metre swim platform where sunloungers and cocktails await. A custom tender was designed to match the style of Quinta Essentia and safely transport her guests in luxury to port. The tender is launched through a hull opening forward on main deck.

The yacht is equipped with an Auxilia Hybrid System, zero speed stabilizers which can operate when anchored and a touch and go helipad.

Quinta Essentia can accommodate twelve guests in six suites, with convertible lower deck staterooms able to be converted from a four to six cabin layout. With accommodation for 13 crew members, Quinta Essentia can provide a perfect yacht charter experience.

The award-winning result aboard Quinta Essentia is an interior décor that is surprisingly feminine and delicate for a yacht with such a sporty exterior profile.

PHOTOGRAPHY: MICHEL REVERBERI STUDIOS | UK.HOLLYHUNT.COM



HOLLY HUNT
LONDON